

# ELEMENTARY STUDENT & PARENT HANDBOOK

2024-2025



**DASMAN** داسمان  
BILINGUAL SCHOOL مدرسة ثنائية اللغة

## INTRODUCTION

Welcome to our condensed, animated Student & Parent Handbook! Take delight in exploring these slides with your child before their school journey begins, ensuring they're well-prepared for what lies ahead. For further details, access the complete handbook via the link provided at the end of this presentation.

If you need to jump to a section in this document, use the index button in the bottom right corner.





<https://sway.cloud.microsoft/SD1cwuASoaBoAPVx#content=WrsYVlc6fwnNkp>

## SCHOOL INFORMATION



<https://sway.cloud.microsoft/SD1cwuASoaBoAPVx#content=yqHY1OcY7aAVI2>

### **PRINCIPAL:**

Mr. Wehann Human

Email: [wehannhu@dasmanschool.com.kw](mailto:wehannhu@dasmanschool.com.kw)

Mobile: +96567095227

### **OFFICE:**

Tel: 22277377 (Elementary Ext: 202)

Secretary: [razan.rashid@dasmanschool.com.kw](mailto:razan.rashid@dasmanschool.com.kw)

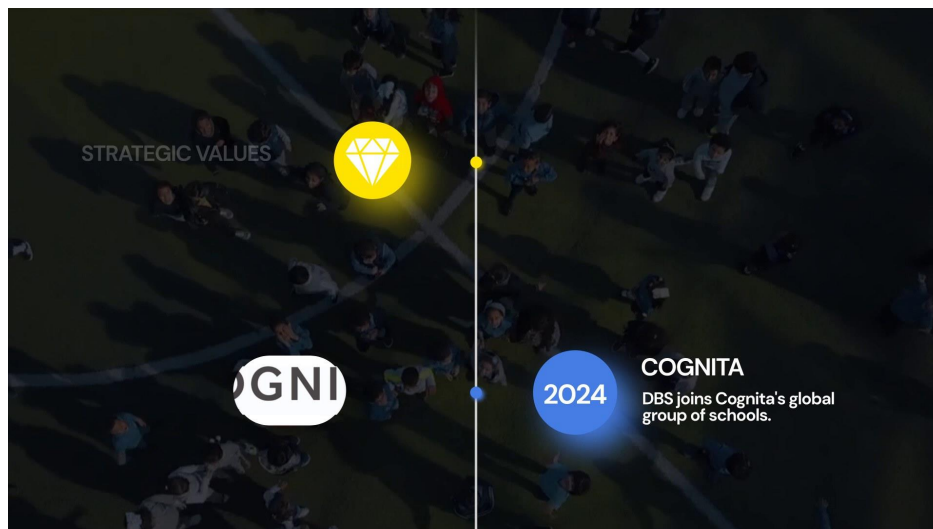
**WEBSITE:**

[Click Here](https://dbs.edu.kw) (dbs.edu.kw)

**VIRTUAL TOUR:**

[Click Here](#)

## GUIDING STATEMENTS



<https://sway.cloud.microsoft/SD1cwuASoaBoAPVx#content=UJ2Z023AZSuSzx>

## WHAT DO I NEED?

**WHAT DO I NEED?**

HOME ABOUT US ACADEMIC SPORTS ADMISSION EMPLOYMENT TECHNOLOGY WELL-BEING CONTACT US

PROGRESS IS NOT PERFECTION

Welcome to Dasman Bilingual School

Dasman Bilingual School defines learning as a process of values and competencies demonstrated through

**SCHOOL SUPPLIES**  
Supply lists posted on the website

<https://sway.cloud.microsoft/SD1cwuASoaBoAPVx#content=ZiigsVITYrc5e>

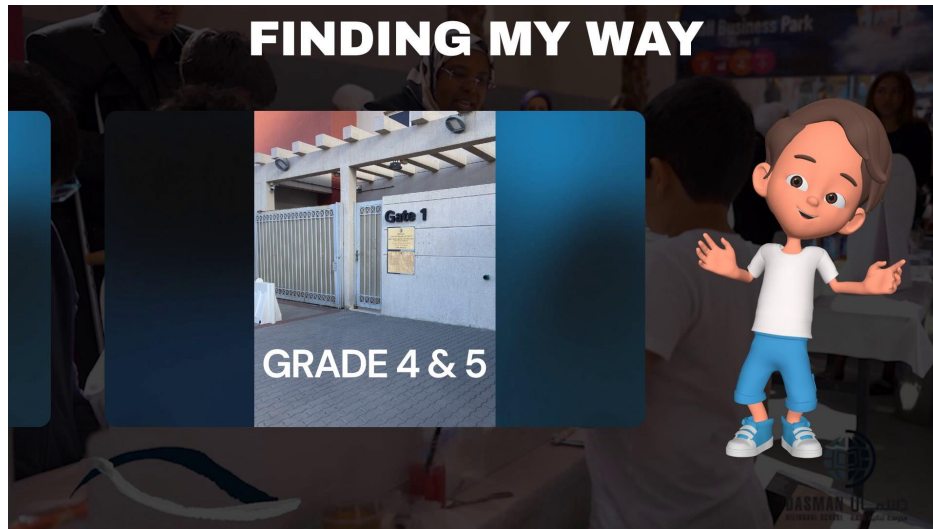


# Dasman Bilingual School

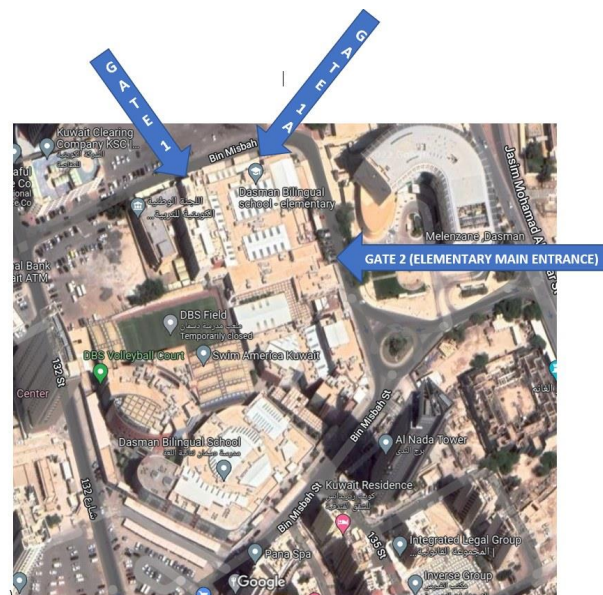
## School Year Calendar 2024-2025

Month	Key Dates & Events	Notes																																										
<b>August 2024</b> <table border="1" style="width: 100%; text-align: center;"> <tr><th>Su</th><th>Mo</th><th>Tu</th><th>We</th><th>Th</th><th>Fr</th><th>Sa</th></tr> <tr><td></td><td></td><td></td><td>1</td><td>2</td><td>3</td><td></td></tr> <tr><td>4</td><td>5</td><td>6</td><td>7</td><td>8</td><td>9</td><td>10</td></tr> <tr><td>11</td><td>12</td><td>13</td><td>14</td><td>15</td><td>16</td><td>17</td></tr> <tr><td>18</td><td>19</td><td>20</td><td>21</td><td>22</td><td>23</td><td>24</td></tr> <tr><td>25</td><td>26</td><td>27</td><td>28</td><td>29</td><td>30</td><td>31</td></tr> </table>	Su	Mo	Tu	We	Th	Fr	Sa				1	2	3		4	5	6	7	8	9	10	11	12	13	14	15	16	17	18	19	20	21	22	23	24	25	26	27	28	29	30	31	11-8 First day for admin, academic staff except teachers, assistants and new staff 14-8 First day for new staff 18-8 First day for returning teachers & assistants 25-8 First day for MS & HS 26-8 First day for SN 27-8 First day for KG and Elementary	3-6 Accreditation Visit 25-27/2 National Day Holiday
Su	Mo	Tu	We	Th	Fr	Sa																																						
			1	2	3																																							
4	5	6	7	8	9	10																																						
11	12	13	14	15	16	17																																						
18	19	20	21	22	23	24																																						
25	26	27	28	29	30	31																																						
<b>September 2024</b> <table border="1" style="width: 100%; text-align: center;"> <tr><th>Su</th><th>Mo</th><th>Tu</th><th>We</th><th>Th</th><th>Fr</th><th>Sa</th></tr> <tr><td>1</td><td>2</td><td>3</td><td>4</td><td>5</td><td>6</td><td>7</td></tr> <tr><td>8</td><td>9</td><td>10</td><td>11</td><td>12</td><td>13</td><td>14</td></tr> <tr><td>15</td><td>16</td><td>17</td><td>18</td><td>19</td><td>20</td><td>21</td></tr> <tr><td>22</td><td>23</td><td>24</td><td>25</td><td>26</td><td>27</td><td>28</td></tr> <tr><td>29</td><td>30</td><td></td><td></td><td></td><td></td><td></td></tr> </table>	Su	Mo	Tu	We	Th	Fr	Sa	1	2	3	4	5	6	7	8	9	10	11	12	13	14	15	16	17	18	19	20	21	22	23	24	25	26	27	28	29	30						15-9 Prophet's Birthday (PRUH) Holiday 17-9 KG & Elementary Open House 18-9 MS, HS, SN Open House 26-9 PDI No School for Students	1-3 Ramadan Begins 2-3 School Resumes 23-27/3 Spring Holiday 30/3-03/4 Eid Al-Fitr Holiday
Su	Mo	Tu	We	Th	Fr	Sa																																						
1	2	3	4	5	6	7																																						
8	9	10	11	12	13	14																																						
15	16	17	18	19	20	21																																						
22	23	24	25	26	27	28																																						
29	30																																											
<b>October 2024</b> <table border="1" style="width: 100%; text-align: center;"> <tr><th>Su</th><th>Mo</th><th>Tu</th><th>We</th><th>Th</th><th>Fr</th><th>Sa</th></tr> <tr><td></td><td></td><td>1</td><td>2</td><td>3</td><td>4</td><td>5</td></tr> <tr><td>6</td><td>7</td><td>8</td><td>9</td><td>10</td><td>11</td><td>12</td></tr> <tr><td>13</td><td>14</td><td>15</td><td>16</td><td>17</td><td>18</td><td>19</td></tr> <tr><td>20</td><td>21</td><td>22</td><td>23</td><td>24</td><td>25</td><td>26</td></tr> <tr><td>27</td><td>28</td><td>29</td><td>30</td><td>31</td><td></td><td></td></tr> </table>	Su	Mo	Tu	We	Th	Fr	Sa			1	2	3	4	5	6	7	8	9	10	11	12	13	14	15	16	17	18	19	20	21	22	23	24	25	26	27	28	29	30	31			10-10 Online for Students 24-27/10 Mid-Semester Break 28-10 School Resumes	6-4 School Resumes 27/04-06/5 Grade 12 Exam
Su	Mo	Tu	We	Th	Fr	Sa																																						
		1	2	3	4	5																																						
6	7	8	9	10	11	12																																						
13	14	15	16	17	18	19																																						
20	21	22	23	24	25	26																																						
27	28	29	30	31																																								
<b>November 2024</b> <table border="1" style="width: 100%; text-align: center;"> <tr><th>Su</th><th>Mo</th><th>Tu</th><th>We</th><th>Th</th><th>Fr</th><th>Sa</th></tr> <tr><td></td><td></td><td></td><td></td><td>1</td><td>2</td><td></td></tr> <tr><td>3</td><td>4</td><td>5</td><td>6</td><td>7</td><td>8</td><td>9</td></tr> <tr><td>10</td><td>11</td><td>12</td><td>13</td><td>14</td><td>15</td><td>16</td></tr> <tr><td>17</td><td>18</td><td>19</td><td>20</td><td>21</td><td>22</td><td>23</td></tr> <tr><td>24</td><td>25</td><td>26</td><td>27</td><td>28</td><td>29</td><td>30</td></tr> </table>	Su	Mo	Tu	We	Th	Fr	Sa					1	2		3	4	5	6	7	8	9	10	11	12	13	14	15	16	17	18	19	20	21	22	23	24	25	26	27	28	29	30		11-20/5 MS & HS Exams 29-5 End of Semester 2 / Last Day for Students
Su	Mo	Tu	We	Th	Fr	Sa																																						
				1	2																																							
3	4	5	6	7	8	9																																						
10	11	12	13	14	15	16																																						
17	18	19	20	21	22	23																																						
24	25	26	27	28	29	30																																						
<b>December 2024</b> <table border="1" style="width: 100%; text-align: center;"> <tr><th>Su</th><th>Mo</th><th>Tu</th><th>We</th><th>Th</th><th>Fr</th><th>Sa</th></tr> <tr><td>1</td><td>2</td><td>3</td><td>4</td><td>5</td><td>6</td><td>7</td></tr> <tr><td>8</td><td>9</td><td>10</td><td>11</td><td>12</td><td>13</td><td>14</td></tr> <tr><td>15</td><td>16</td><td>17</td><td>18</td><td>19</td><td>20</td><td>21</td></tr> <tr><td>22</td><td>23</td><td>24</td><td>25</td><td>26</td><td>27</td><td>28</td></tr> <tr><td>29</td><td>30</td><td>31</td><td></td><td></td><td></td><td></td></tr> </table>	Su	Mo	Tu	We	Th	Fr	Sa	1	2	3	4	5	6	7	8	9	10	11	12	13	14	15	16	17	18	19	20	21	22	23	24	25	26	27	28	29	30	31					08-10/12 MS & HS Exams 17-12 Make-up Exams 18-12 End of Semester 1 19/12-21 Winter Holiday	3-6 Report Cards Sent Home 4-4 Last day for Teachers & Assistants 5-6 Last day for HODs, Coordinators, Psychologists, Counselors, Admin-Academic Staff * SLT, Vice Principals, Sen. Coord, Admin Staff 6-6 Arafat Day 07-09/0 Eid Al-Adha
Su	Mo	Tu	We	Th	Fr	Sa																																						
1	2	3	4	5	6	7																																						
8	9	10	11	12	13	14																																						
15	16	17	18	19	20	21																																						
22	23	24	25	26	27	28																																						
29	30	31																																										
<b>January 2025</b> <table border="1" style="width: 100%; text-align: center;"> <tr><th>Su</th><th>Mo</th><th>Tu</th><th>We</th><th>Th</th><th>Fr</th><th>Sa</th></tr> <tr><td></td><td></td><td>1</td><td>2</td><td>3</td><td>4</td><td></td></tr> <tr><td>5</td><td>6</td><td>7</td><td>8</td><td>9</td><td>10</td><td>11</td></tr> <tr><td>12</td><td>13</td><td>14</td><td>15</td><td>16</td><td>17</td><td>18</td></tr> <tr><td>19</td><td>20</td><td>21</td><td>22</td><td>23</td><td>24</td><td>25</td></tr> <tr><td>26</td><td>27</td><td>28</td><td>29</td><td>30</td><td>31</td><td></td></tr> </table>	Su	Mo	Tu	We	Th	Fr	Sa			1	2	3	4		5	6	7	8	9	10	11	12	13	14	15	16	17	18	19	20	21	22	23	24	25	26	27	28	29	30	31		5-1 School Resumes 23-1 Report Cards Sent Home 26-1 Parent Teacher Conferences 27-1 Iken and Miraj Holiday	*Admin-Academic Staff, Accreditation Officer, Curriculum Coordinator, ET Coordinator, PR Officer, Library Staff, Secretaries, Receptionists. Disclaimer: Please note that holidays are subject to change by the Ministry. Islamic holidays will be determined by the Ministry.
Su	Mo	Tu	We	Th	Fr	Sa																																						
		1	2	3	4																																							
5	6	7	8	9	10	11																																						
12	13	14	15	16	17	18																																						
19	20	21	22	23	24	25																																						
26	27	28	29	30	31																																							
<b>Semester 1 Days</b> <b>81</b>	<b>Total Student Days</b> <b>174</b>	<b>Semester 2 Days</b> <b>93</b>																																										

## FINDING MY WAY



<https://sway.cloud.microsoft/SD1cwuASoaBoAPVx#content=mAS6D1SD2Zf72G>



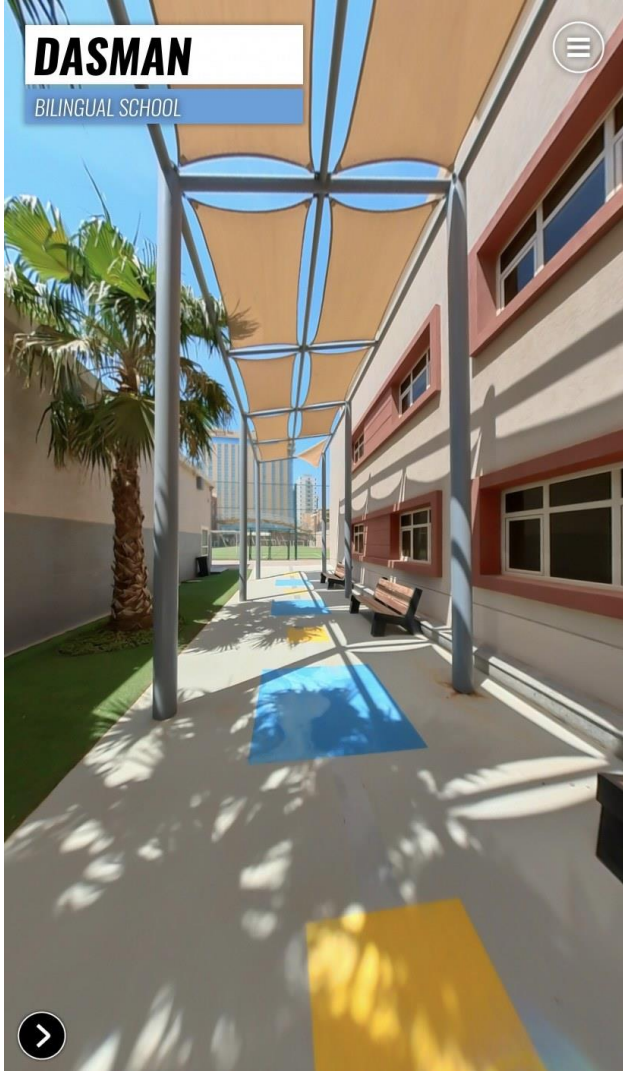
## WHAT WILL I DO AT DBS?



<https://sway.cloud.microsoft/SD1cwuASoaBoAPVx#content=SzC9S5g209EKKM>

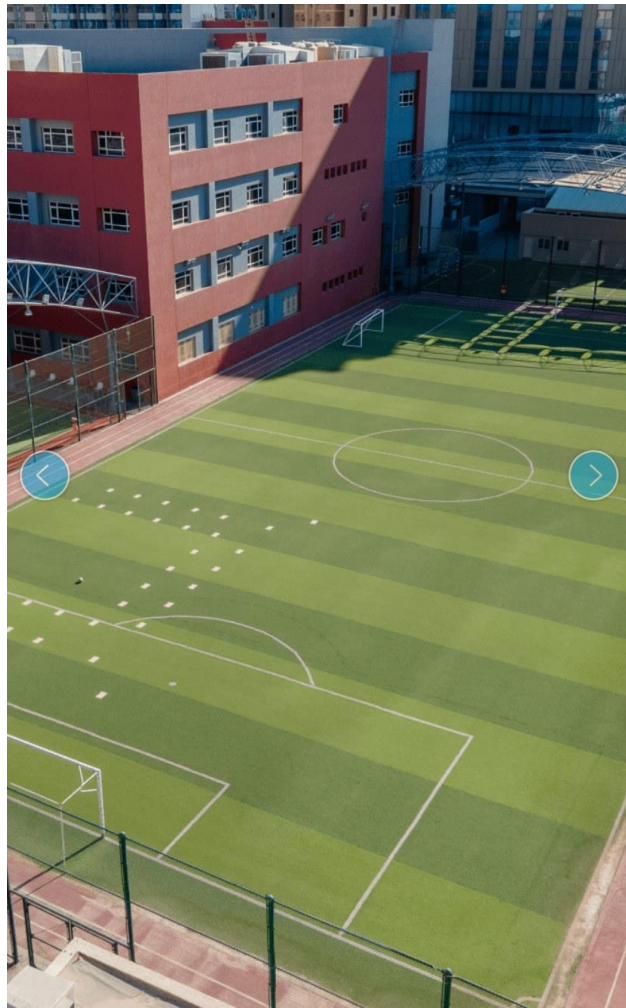
**DASMAN**

BILINGUAL SCHOOL



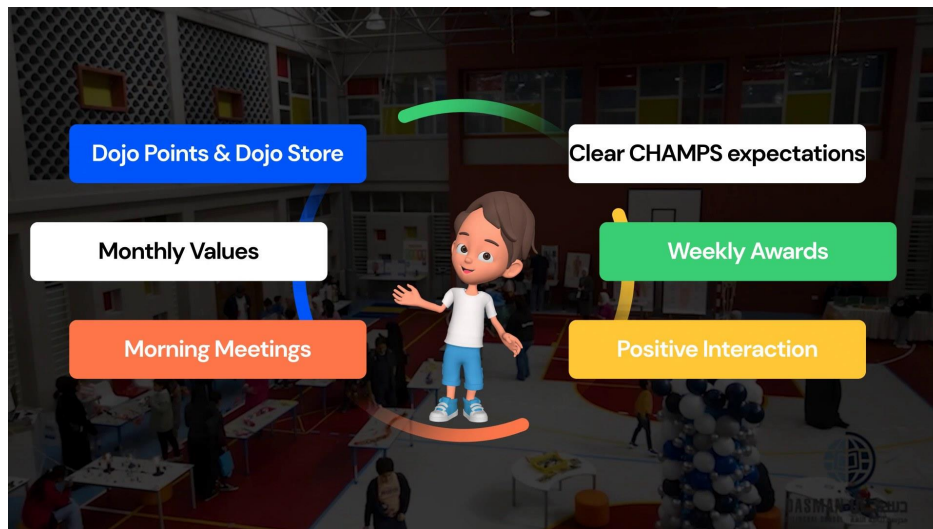








## EXPECTATIONS



<https://sway.cloud.microsoft/SD1cwuASoaBoAPVx#content=htLXJbAmoziRRP>



# ELEMENTARY DISCIPLINARY PROCEDURES

## STUDENT BEHAVIOR

Not following classroom expectations

Not keeping hands/feet to self

Unacceptable language

Disrespect

## TEACHER RESPONSE

Log behavior on the Behavior Tracker

Implement intervention

Contact parents via email, phone call and or ClassDojo

## TEACHER INTERVENTION

Change seating arrangements

Remove outside break

Add and or remove Dojo Points

Restorative practices

Parent meeting

# SERIOUS OFFENCES

## STUDENT BEHAVIOR

Physical altercations

Repeated behavior (fifth offence on behavior log)

Inappropriate content

Bullying

Racism / discrimination

## TEACHER & ADMIN RESPONSE

Contact parents via phone call

Parent meeting

## ADMIN INTERVENTION

Restorative practices

In-School suspension

Out of school suspension

Blocked from DBS

## HOME-SCHOOL COMMUNICATION



<https://sway.cloud.microsoft/SD1cwuASoaBoAPVx#content=dDeJYkQoWGMWq>

[FULL VERSION: CLICK HERE](#)

# COGNITA